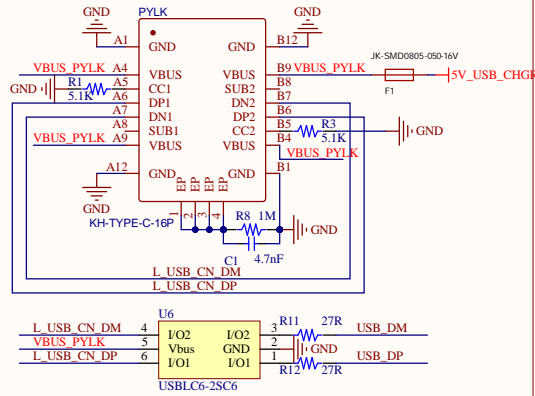
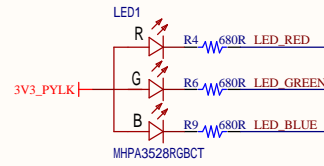


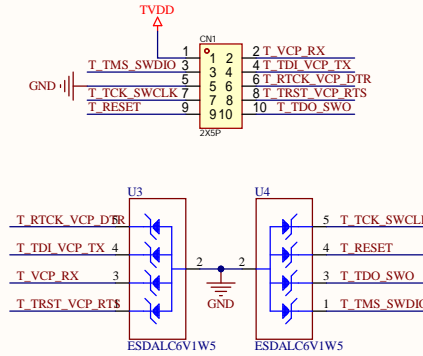
USB



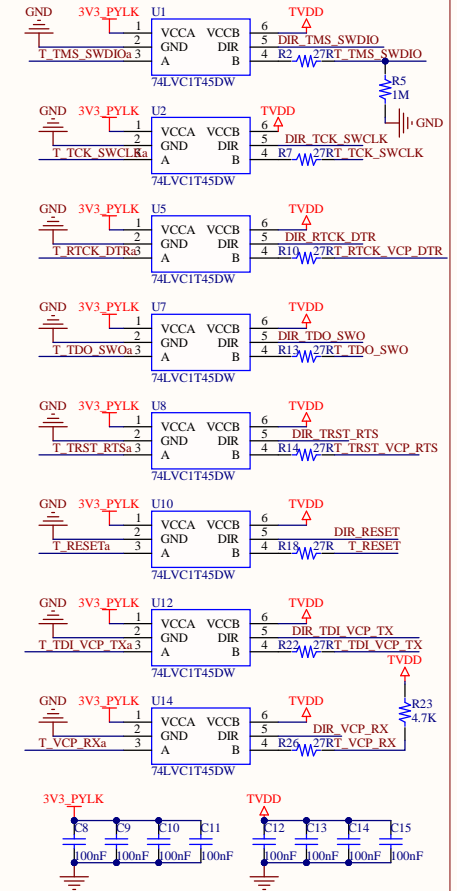
LED



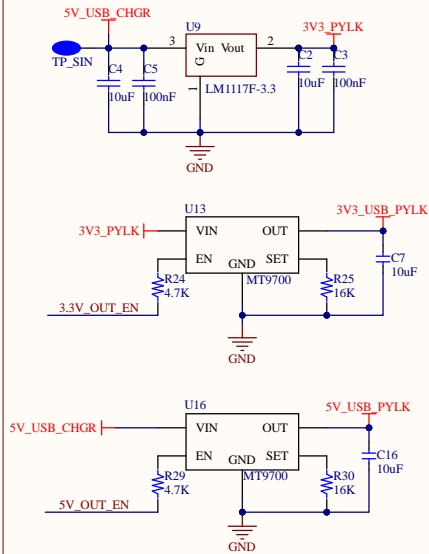
Debug Connector



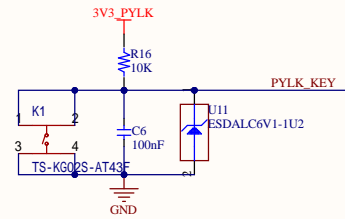
Level Shift



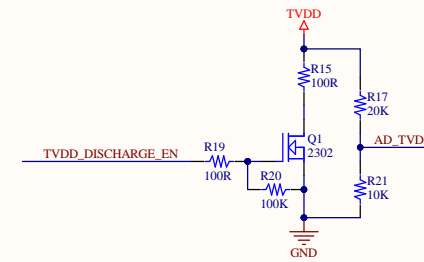
Power



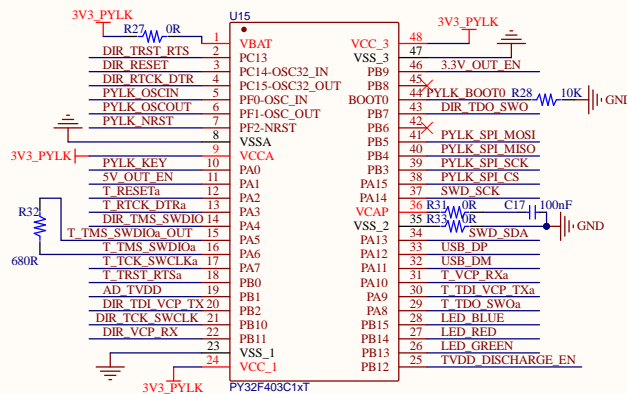
Key



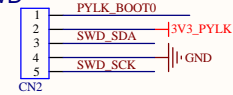
ADC&Electric discharge



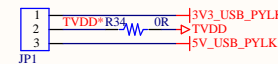
MCU



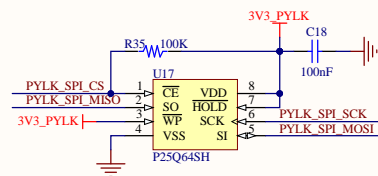
SWD



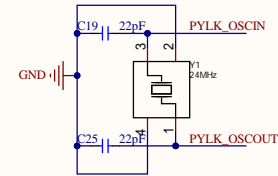
TVDD_Selection



Flash



OSC

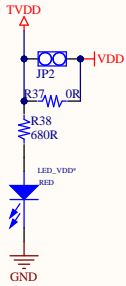


When the DIR pin is set to logic high (1), the data direction is from VCCA to VCCB.
When the DIR pin is set to logic low(0), the data direction is from VCCB to VCCA

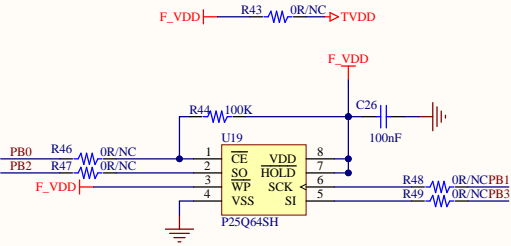
T_TRST_VCP_RTS	T_TRST_VCP_RTS
T_RTCK_VCP_DTR	T_RTCK_VCP_DTR
T_TDI_VCP_TX	T_TDI_VCP_TX
T_VCP_RX	T_TDI_VCP_TX
T_VCP_RX	T_TDI_VCP_TX
T_TDO_SWO	T_TDO_SWO
T_RESET	T_TDO_SWO
T_TCK_SWCLK	T_TCK_SWCLK
T_TMS_SWDIO	T_TMS_SWDIO



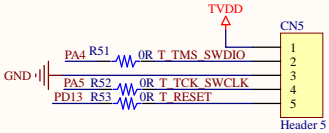
VDD_Selection



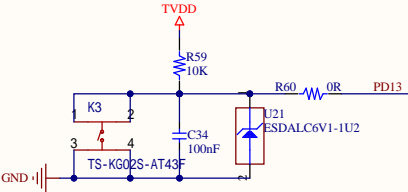
FLASH



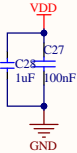
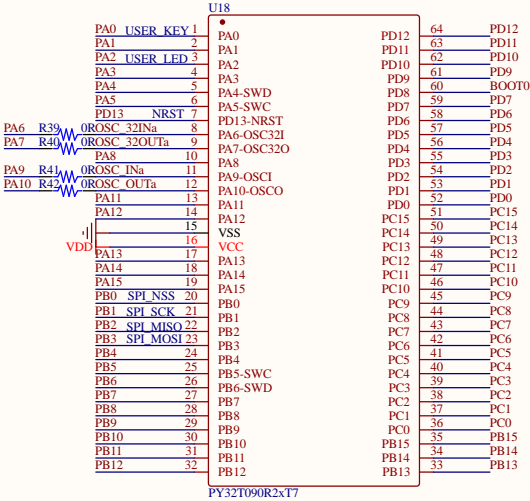
Debug Connector



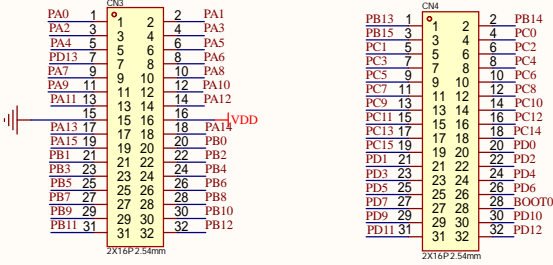
NRST



MCU



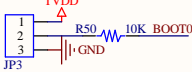
Extension PIN



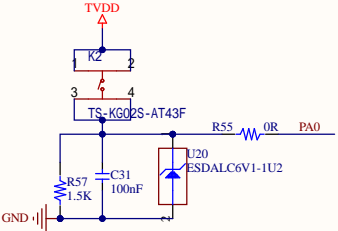
Led



Boot_Selection



USER_KEY



T_TRST_VCP_RTS	<<T_TRST_VCP_RTS
T_RTCK_VCP_DTR	<<T_RTCK_VCP_DTR
T_TDI_VCP_TX	<<T_TDI_VCP_TX
T_VCP_RX	<<T_VCP_RX
T_TDO_SWO	<<T_TDO_SWO
T_RESET	<<T_RESET
T_TCK_SWCLK	<<T_TCK_SWCLK
T_TMS_SWDIO	<<T_TMS_SWDIO

