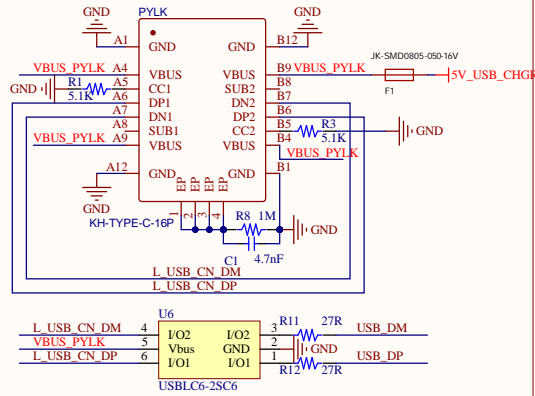
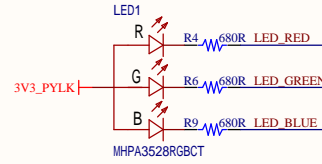


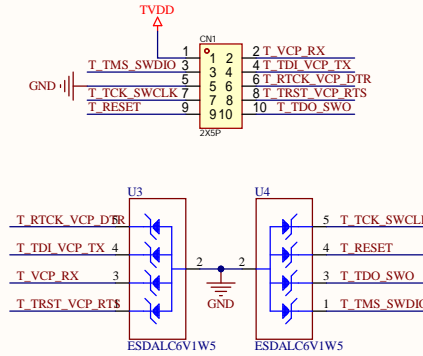
USB



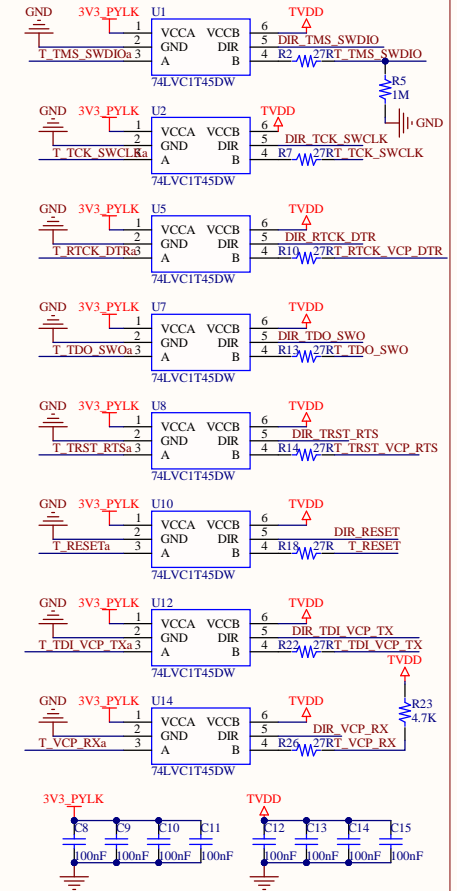
LED



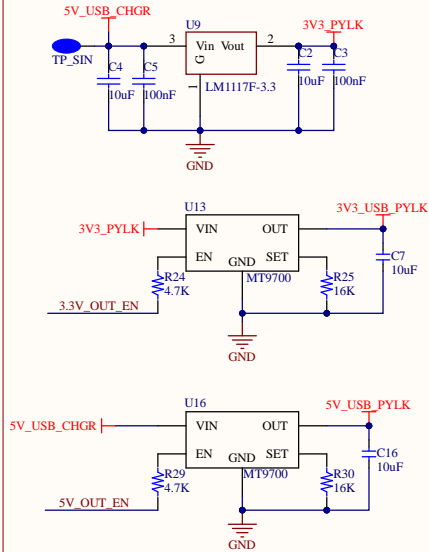
Debug Connector



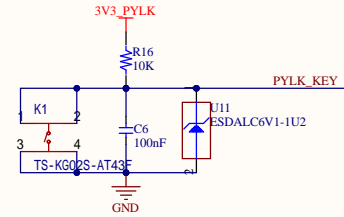
Level Shift



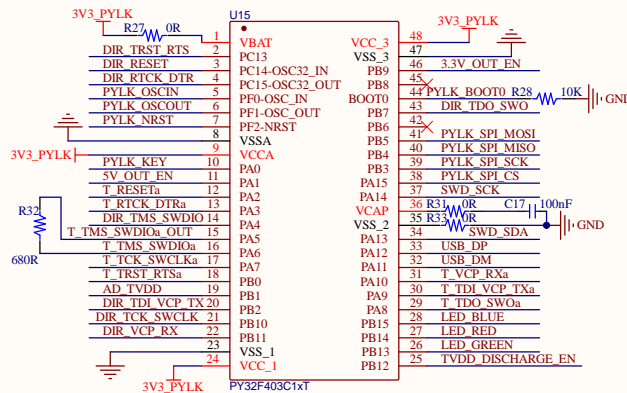
Power



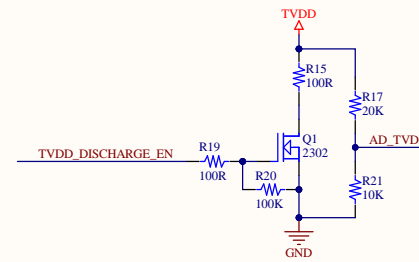
Key



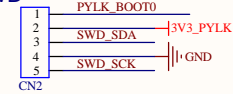
MCU



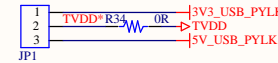
ADC&Electric discharge



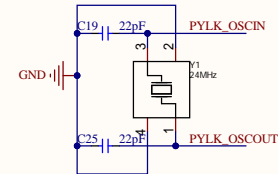
SWD



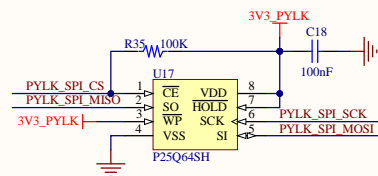
TVDD_Selection



OSC



Flash

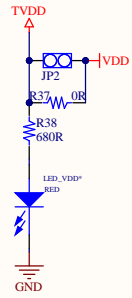


When the DIR pin is set to logic high (1), the data direction is from VCCA to VCCB.
When the DIR pin is set to logic low(0), the data direction is from VCCB to VCCA

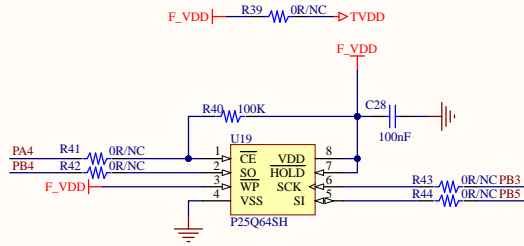
T_TRST_VCP_RTS
T_RTCK_VCP_DTR
T_TDI_VCP_TX
T_VCP_RX
T_TDO_SWO
T_RESET
T_TCK_SWCLK
T_TMS_SWDIO
T_TRST_VCP_RTS
T_RTCK_VCP_DTR
T_TDI_VCP_TX
T_VCP_RX
T_TDO_SWO
T_RESET
T_TCK_SWCLK
T_TMS_SWDIO



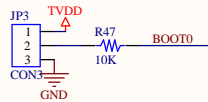
VDD_IDD Test



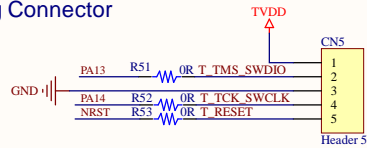
FLASH



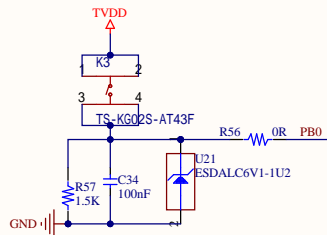
BOOT_OPTION



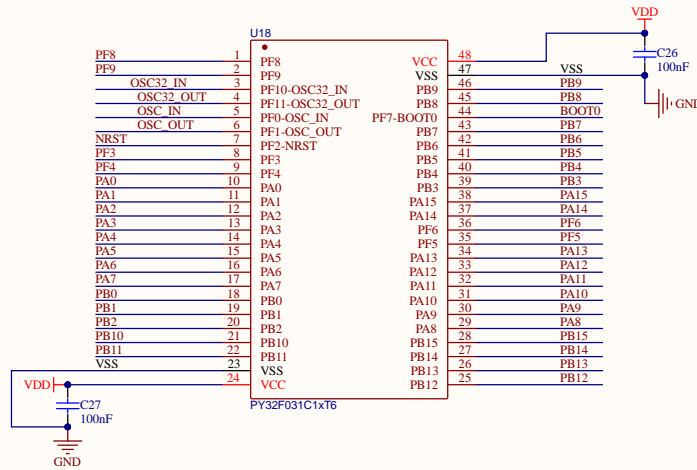
Debug Connector



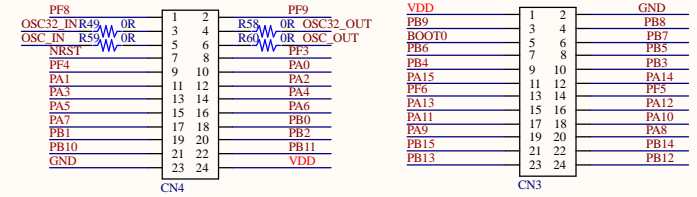
Key



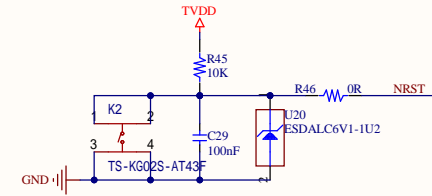
MCU



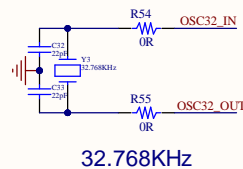
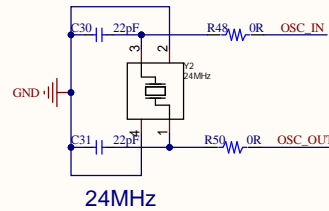
Extension PIN



NRST



OSC



LED



T_TRST_VCP_RTS	T_TRST_VCP_RTS
T_RTCK_VCP_DTR	T_RTCK_VCP_DTR
T_TDI_VCP_TX	T_TDI_VCP_TX
T_VCP_RX	T_VCP_RX
T_TDO_SWO	T_TDO_SWO
T_RESET	T_RESET
T_TCK_SWCLK	T_TCK_SWCLK
T_TMS_SWDIO	T_TMS_SWDIO

